

RATE REDUCTION!

Prime Beverly Hills Adjacent Retail For Lease



904 S. Robertson Boulevard, Los Angeles, CA 90035



Laura Pozarny, Executive Vice-President
(310) 458-4100 ext: 222
lpozarny@muselli.net
DRE License 02129230

Evan Pozarny, Executive Vice-President
310-458-4100 ext: 221
epozarny@muselli.net
DRE License 01304769

Muselli Commercial Realtors is excited to present this Beverly Hills Adjacent retail opportunity on Robertson Boulevard. This unique space offers 2,200 square feet of retail space previously occupied by Skinic Body Aesthetics Center. Great for MedSpa, Pilates/Fitness, Personal Training Studio, Showroom, Clothing Boutique and much more!

Size Approximately 2,200 square feet of retail space

Rental Rate ~~\$3.50~~ **\$3.00**/SF NNN (approximately \$.47/sf).

Lease Term 3-5 years.

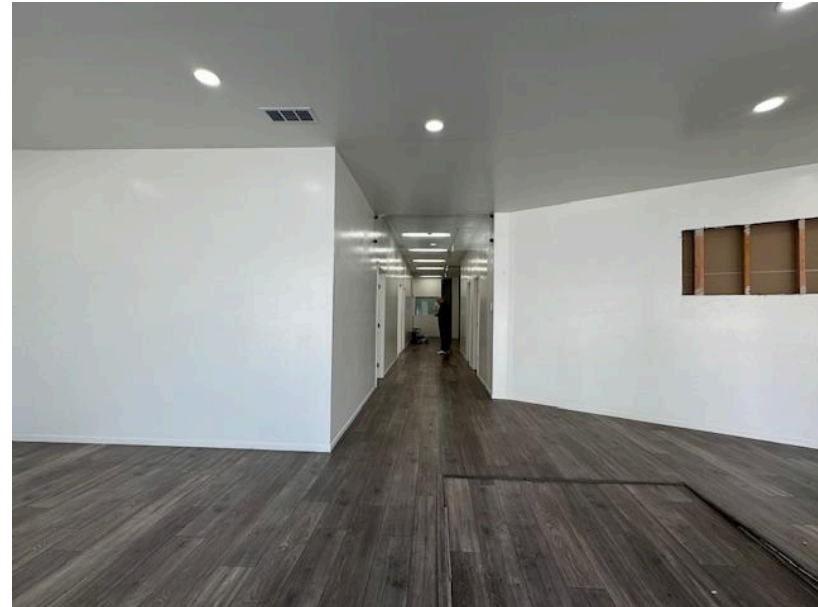
Highlights 35' of Windowed frontage on Robertson Boulevard
8 treatment rooms.
1 private restroom.
Large Reception, Storage room, Kitchen.
Wood floors.
High ceiling, Showroom ready, Light and bright.
Ample Signage.
Double door glass entry.

Parking 4 Parking Spots at no additional charge

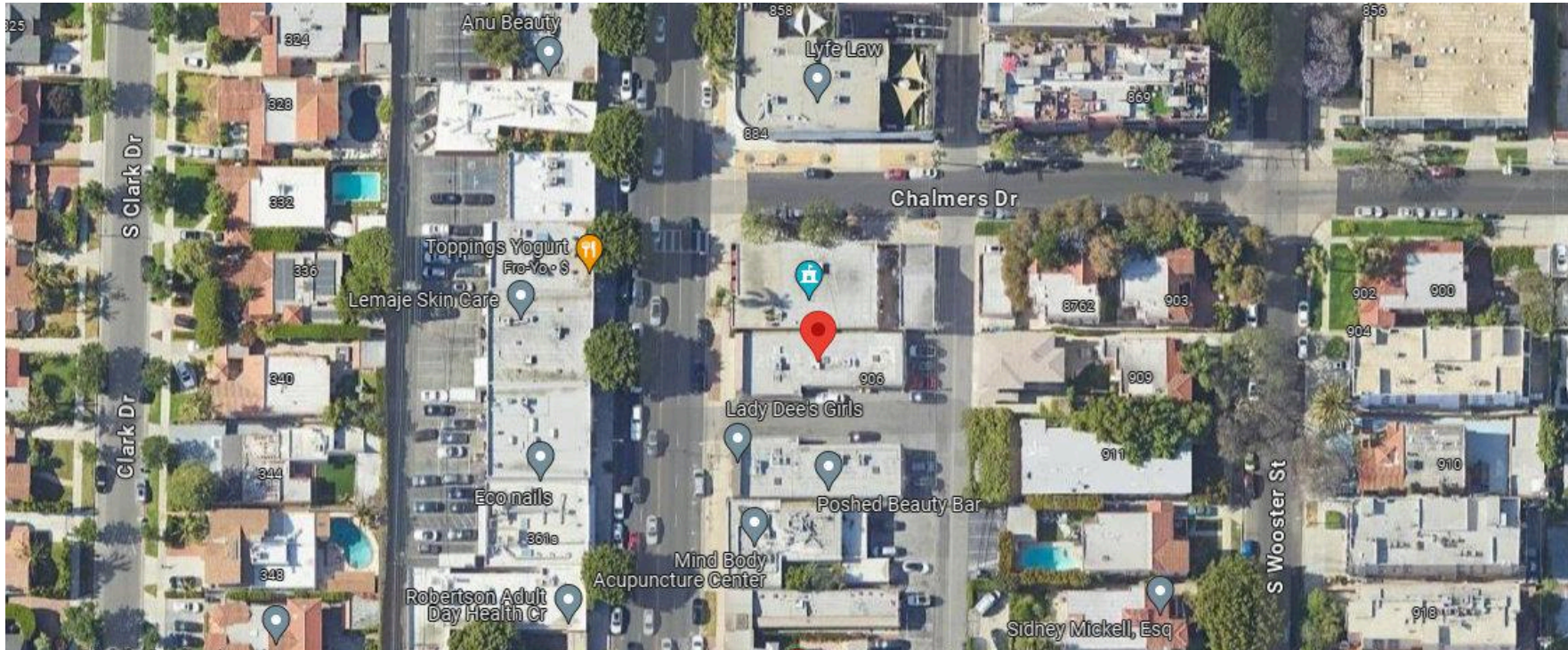
Area Prime Robertson Blvd just north of Olympic Blvd bordering Beverly Hills. 93 Walk Score with many amenities nearby. Within a 10-minute drive are the I-10 or 405 Freeways, Brentwood, Hollywood, West Los Angeles, and the Metro Expo Line.



Interior Images



Map View



1513 6th Street, Suite 201 A • Santa Monica, CA 90401 • (310) 458-4100 • FAX (310) 458-4100 www.muselli.net
DRE BROKER # 00825237

All information furnished is from sources deemed reliable and which we believe to be correct, but representation or guarantee is given as to its accuracy and is subject to errors and omissions. All measurements are approximate and have not been verified by the Broker. You are advised to conduct an independent investigation to verify all information.