



STEPS TO SANTA MONICA CITY HALL
1,086 Square Foot Available + Storage
Best Rate in Downtown Santa Monica
FULL SERVICE

Prime Santa Monica Location with Prominent Freeway Exposure
 (Located immediately off the 4th \ 5th Street Exits from the 10 W. Freeway)



Location: 1640 5th St., Santa Monica

Description: Unique 3 Story Building with Open Patio and Spiral Staircase. Walking Distance to the Third Street Promenade, Santa Monica Place, Santa Monica Pier, Santa Monica Beach, Chamber of Commerce, Santa Monica City Hall, Santa Monica Courthouses and all Downtown Santa Monica Amenities. Located across 4th Street from Santa Monica Police Department Operable Windows and HVAC, No Bayside District Assessment Fees Easy Freeway Access

<u>Suites:</u>	<u>Description:</u>	<u>Status</u>	<u>SF</u>	<u>Rate</u>
110	Executive Office or Conference Room, Two Offices, Reception, Open Area, Private Patio	Available	1,086	\$ 2,552.10 Per Mo. \$ 2.35 Per Sq. Ft
G1-F Storage	Storage Space With Cinderblock Walls, Steel Doors and Patio	Available	1000	\$ 1,500.00 Per Mo \$ 1.50 Per Sq. Ft.
G2-E Storage	Storage Space With Cinderblock Walls, Steel Doors	Available	506	\$ 759.00 Per Mo \$ 1.50 Per Sq. Ft.
100	Reception, 2 Conference Rooms, 24 Rooms and Open Areas. Includes Separate Lunch Room.	Leased	7,681	Leased
114	4 Offices, Reception and Private Patio.	Leased	1,079	Leased
220	3 Offices plus open area, polished concrete floor	Leased	757	Leased
G2-A Storage	Storage Space With Cinder Block Walls and Steel Doors	Leased	325	Leased

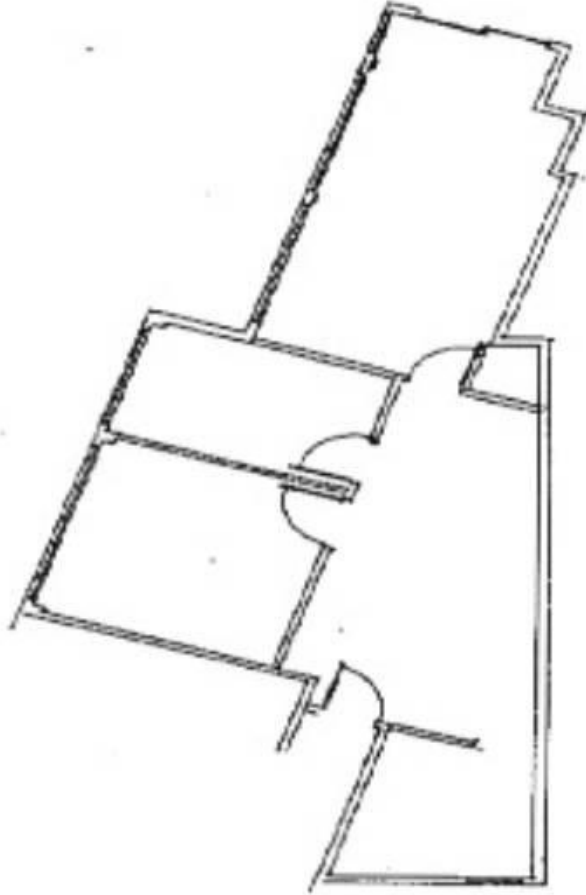
CONTACT Craig Berrett, Senior Vice President 310 458-4100 Ext. 225 Email: cberrett@muselli.net www.muselli.net

501 Santa Monica Boulevard, Suite 701 Santa Monica, CA 90401 (310) 458-4100 FAX (310) 458-4100

All information furnished is from sources deemed reliable and which we believe to be correct, but no representations or guarantees are given as to the accuracy and completeness. All measurements are approximate and have not been verified by Muselli Commercial Realtors. You are advised to conduct your own independent investigation to verify all information.



1640 5th Street, Ste 110 Floor plan
Approximately 1,086 Square Feet



Craig Berrett, Senior Vice President 310-458-4100 ext 225 cberrett@muselli.net

All information furnished is from sources deemed reliable and which we believe to be correct, but no representations or guarantees are given as to the accuracy and completeness. All measurements are approximate and have not been verified by Muselli Commercial Realtors. You are advised to conduct your own independent investigation to verify all information

501 Santa Monica Boulevard, Suite 701 Santa Monica, CA 90401 (310) 458-4100 FAX (310) 458-4100



1640 5th Street, Ste 110 Photos



Executive Conference Room



Patio



Office



Office



Entrance